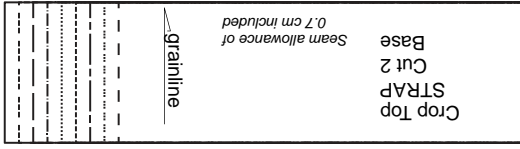
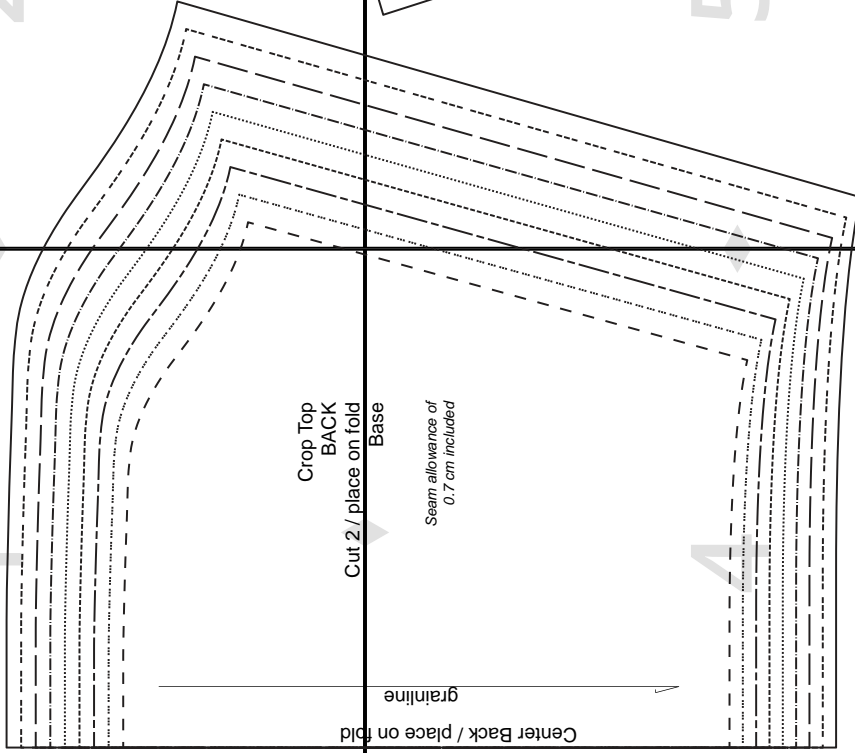


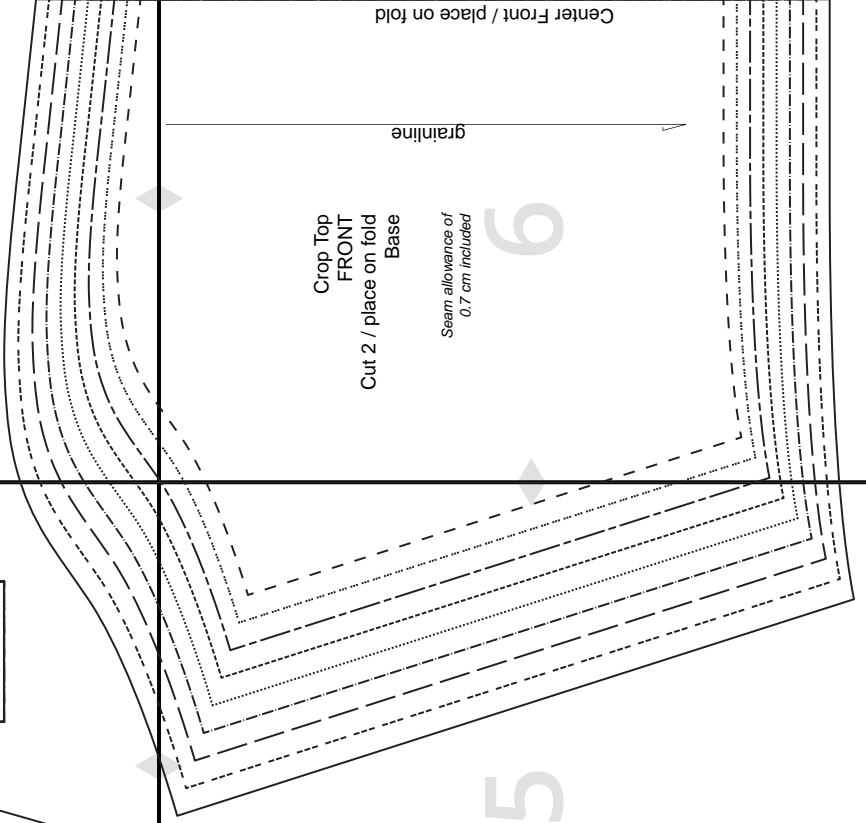
# Crop Top

paper size: US Letter

5 x 5 cm  
Square  
Print and  
Measure this  
Square to Ensure  
Proper Sizing



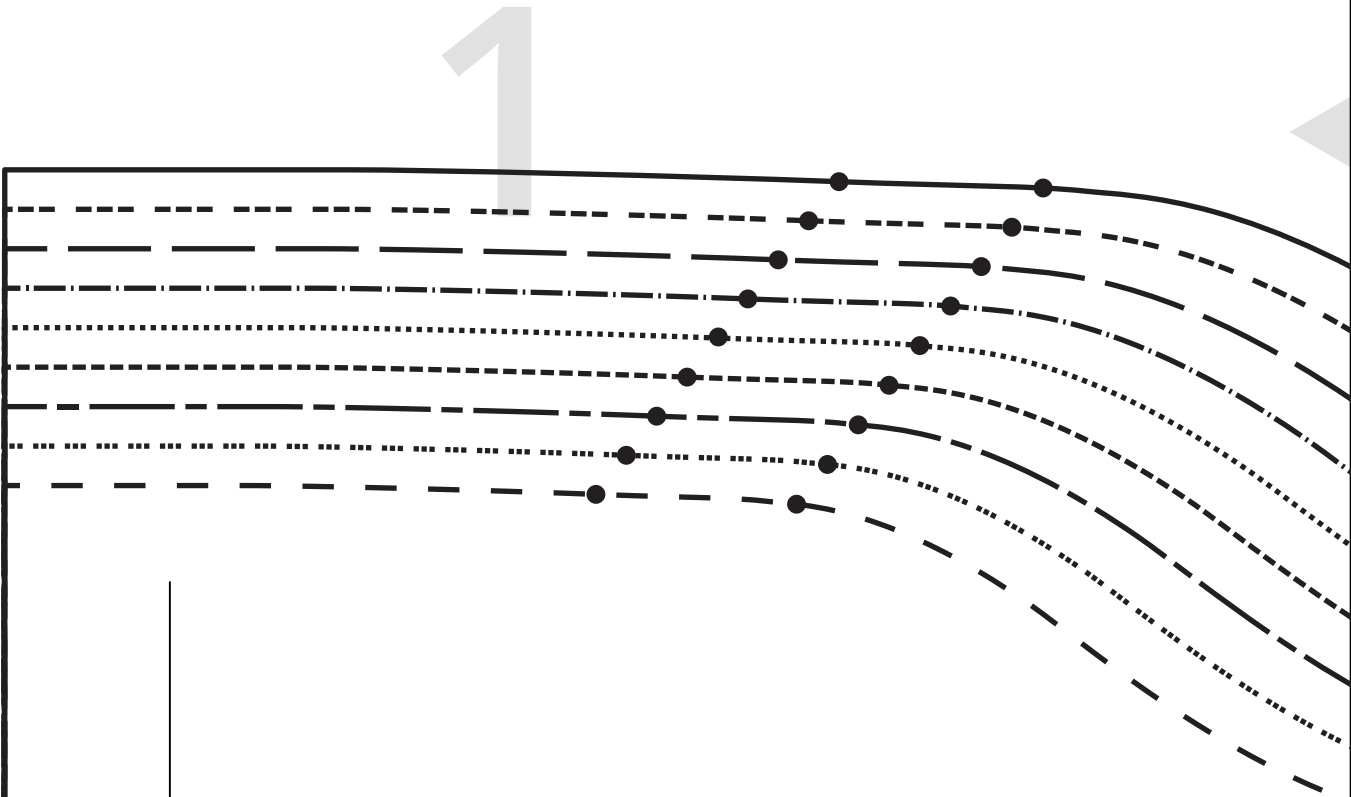
PATTERN SIZE KEY	
- - - - -	SIZE 34
- - - - -	SIZE 36
- - - - -	SIZE 38
- - - - -	SIZE 40
- - - - -	SIZE 42
- - - - -	SIZE 44
- - - - -	SIZE 46
- - - - -	SIZE 48
- - - - -	SIZE 50



# Crop Top

paper size: US Letter

5 x 5 cm  
Square  
*Print and  
Measure this  
Square to Ensure  
Proper Sizing*



old

Crop Top  
BACK

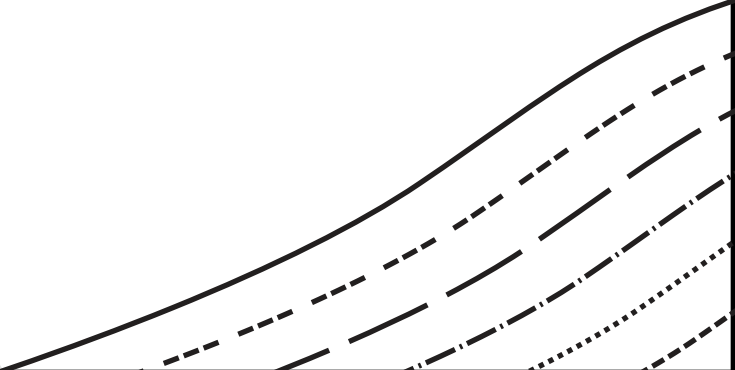
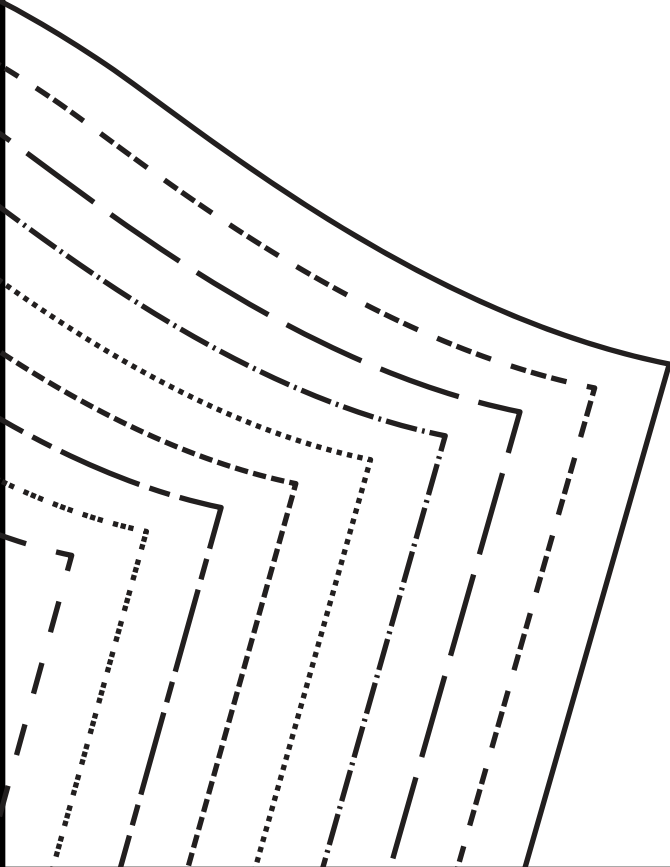
Cut 2 / place on fold

2

Crop Top  
STRAP  
Cut 2  
Base

*Seam allowance of  
0.7 cm included*

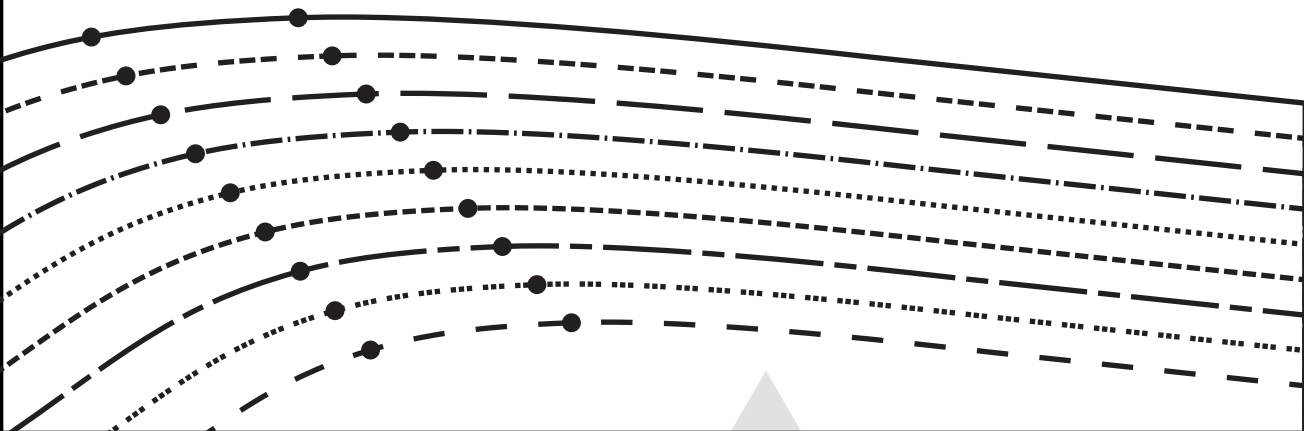
grainline



# PATTERN SIZE KEY

- - - - -	SIZE 34
.....	SIZE 36
—————	SIZE 38
- - - - -	SIZE 40
.....	SIZE 42
- . - . - .	SIZE 44
—————	SIZE 46
- - - - -	SIZE 48
—————	SIZE 50

3

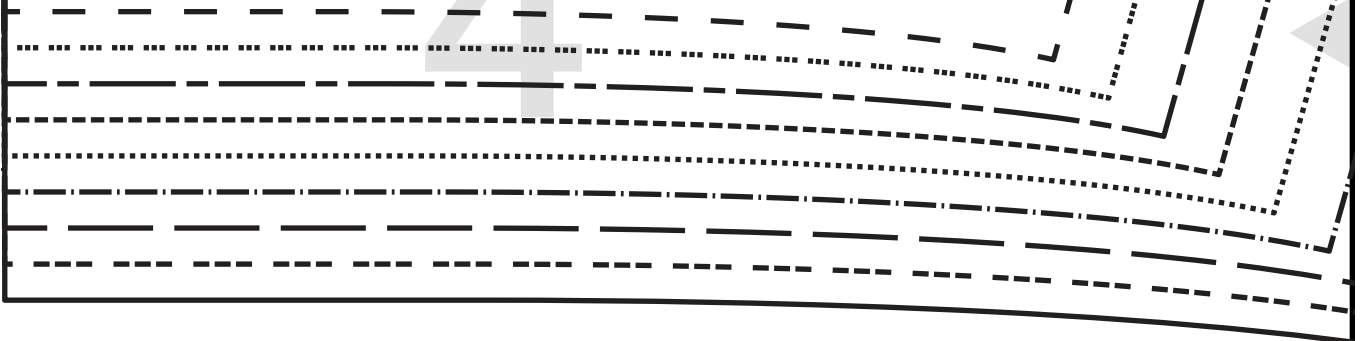


Center Back / place on f

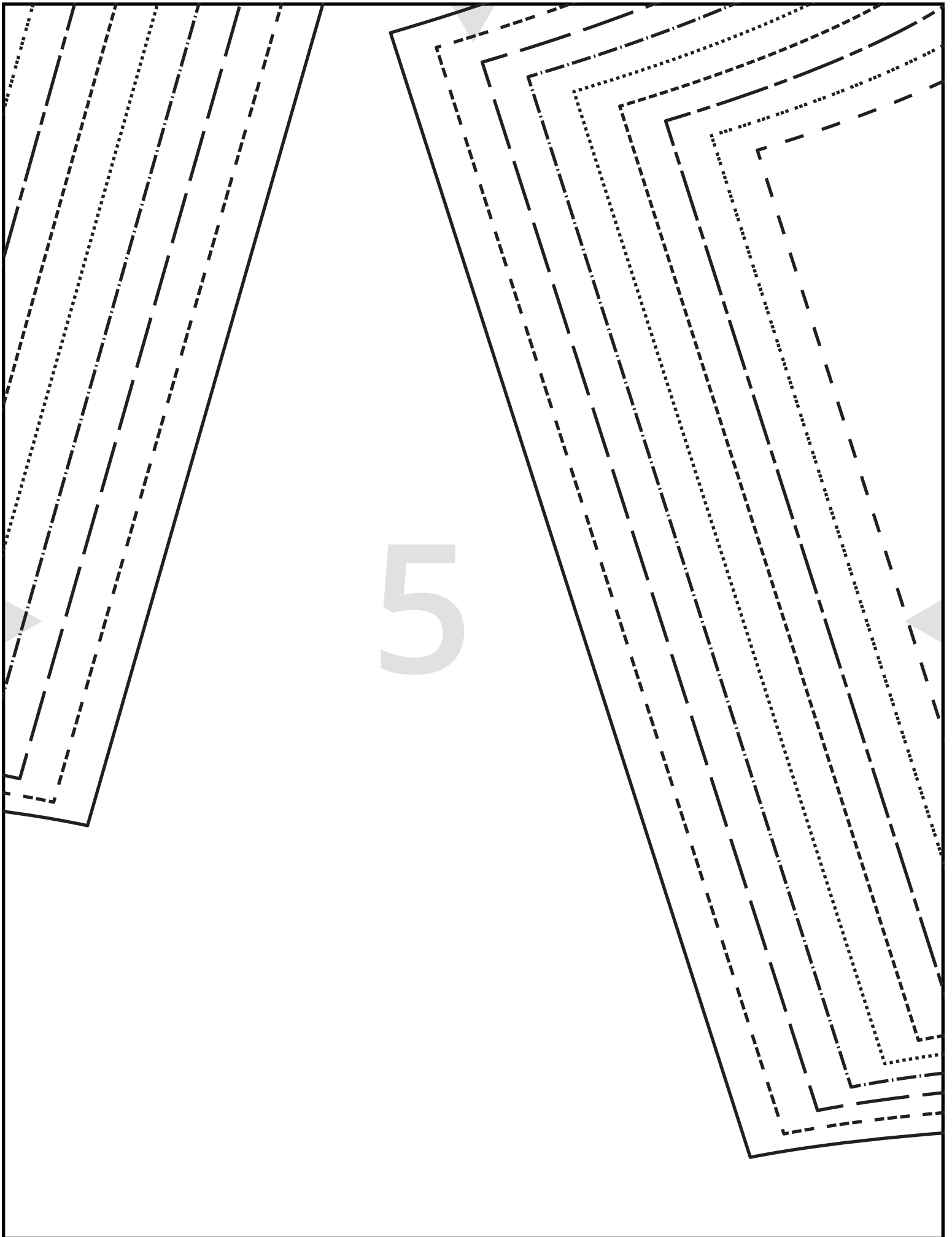
grainline

Base

*Seam allowance of  
0.7 cm included*



5



Crop Top  
FRONT  
Cut 2 / place on fold  
Base

*Seam allowance of  
0.7 cm included*

6

grainline

Center Front / place on fold

