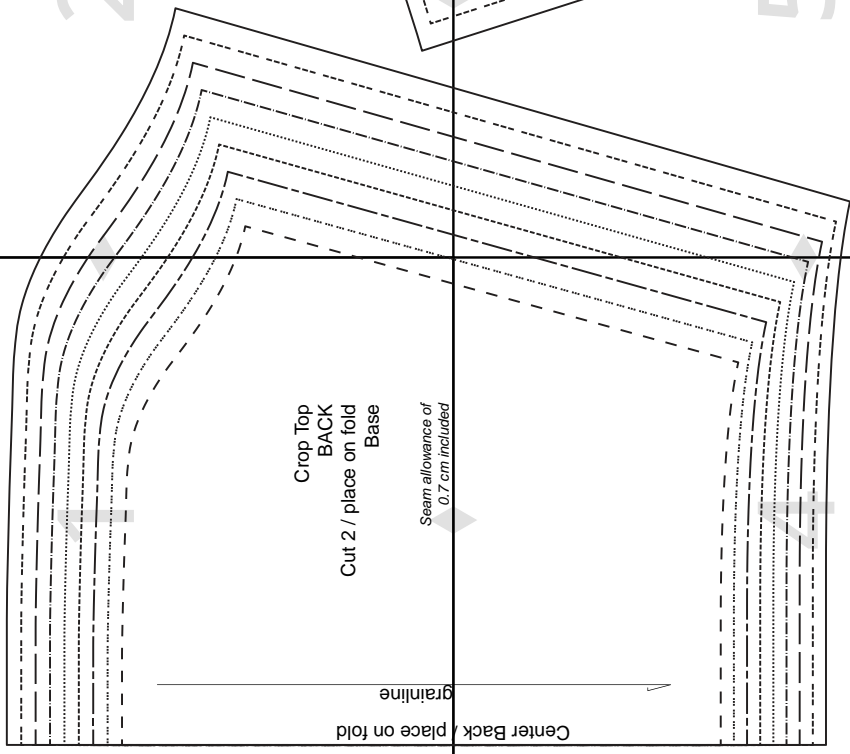


Crop Top

paper size: A4

5 x 5 cm
Square
Print and
Measure this
Square to Ensure
Proper Sizing

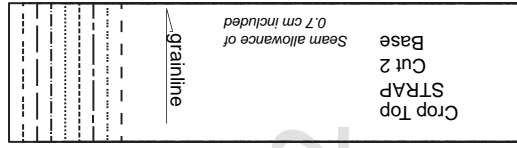


Crop Top
BACK
Cut 2 / place on fold
Base

Seam allowance of
0.7 cm included

Center Back / place on fold

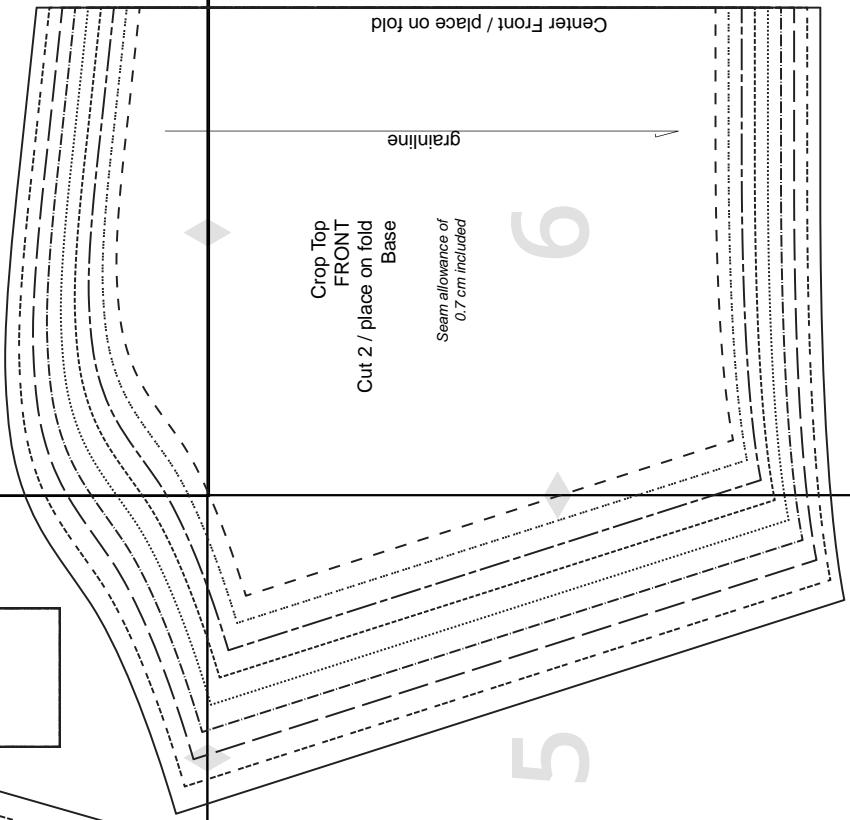
grainline



Crop Top
STRAP
Cut 2
Base

Seam allowance of
0.7 cm included

grainline



Crop Top
FRONT
Cut 2 / place on fold
Base

Seam allowance of
0.7 cm included

Center Front / place on fold

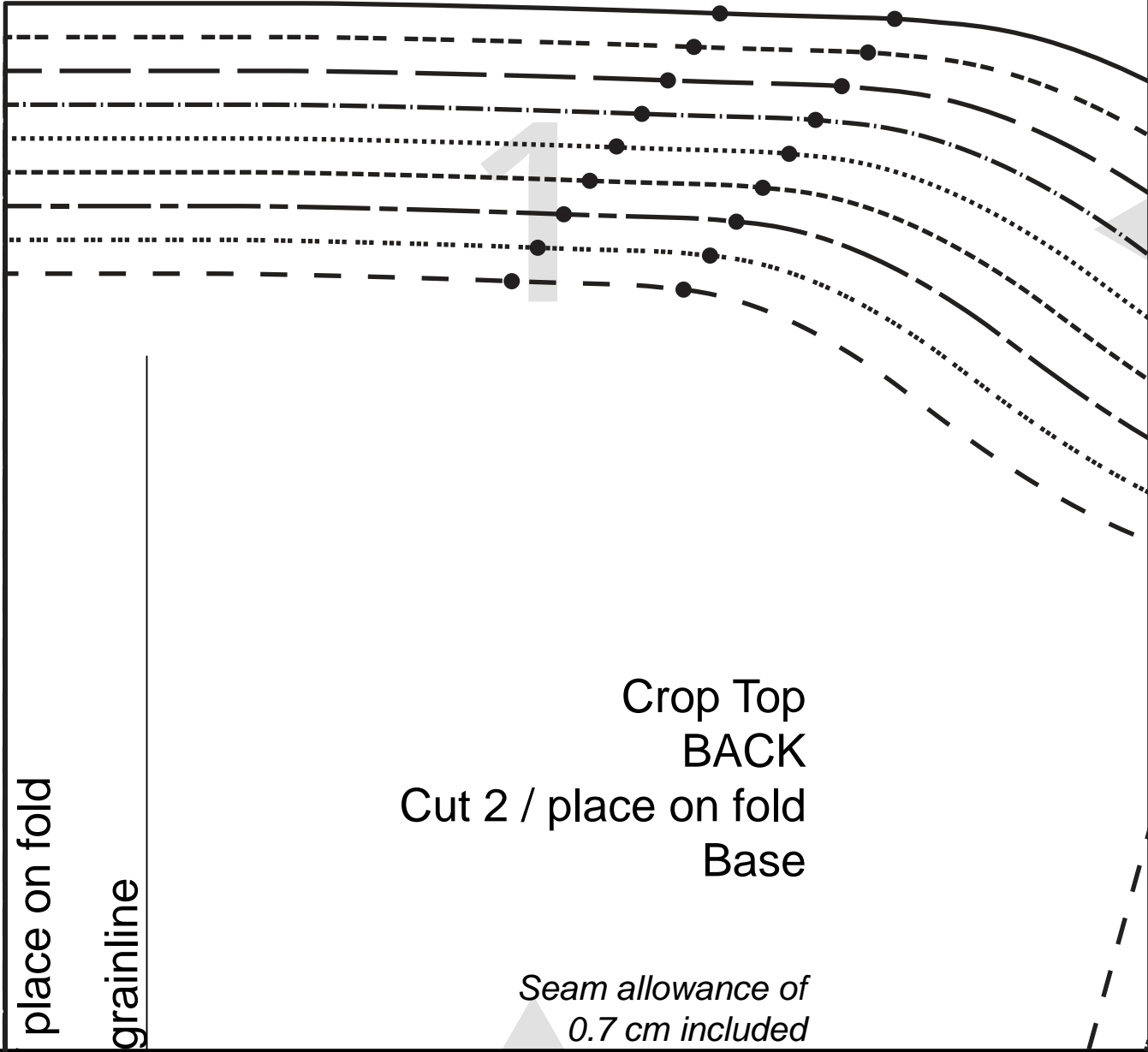
grainline

PATTERN SIZE KEY	
---	SIZE 34
---	SIZE 36
---	SIZE 38
---	SIZE 40
---	SIZE 42
---	SIZE 44
---	SIZE 46
---	SIZE 48
---	SIZE 50

Crop Top

paper size: A4

5 x 5 cm
Square
*Print and
Measure this
Square to Ensure
Proper Sizing*

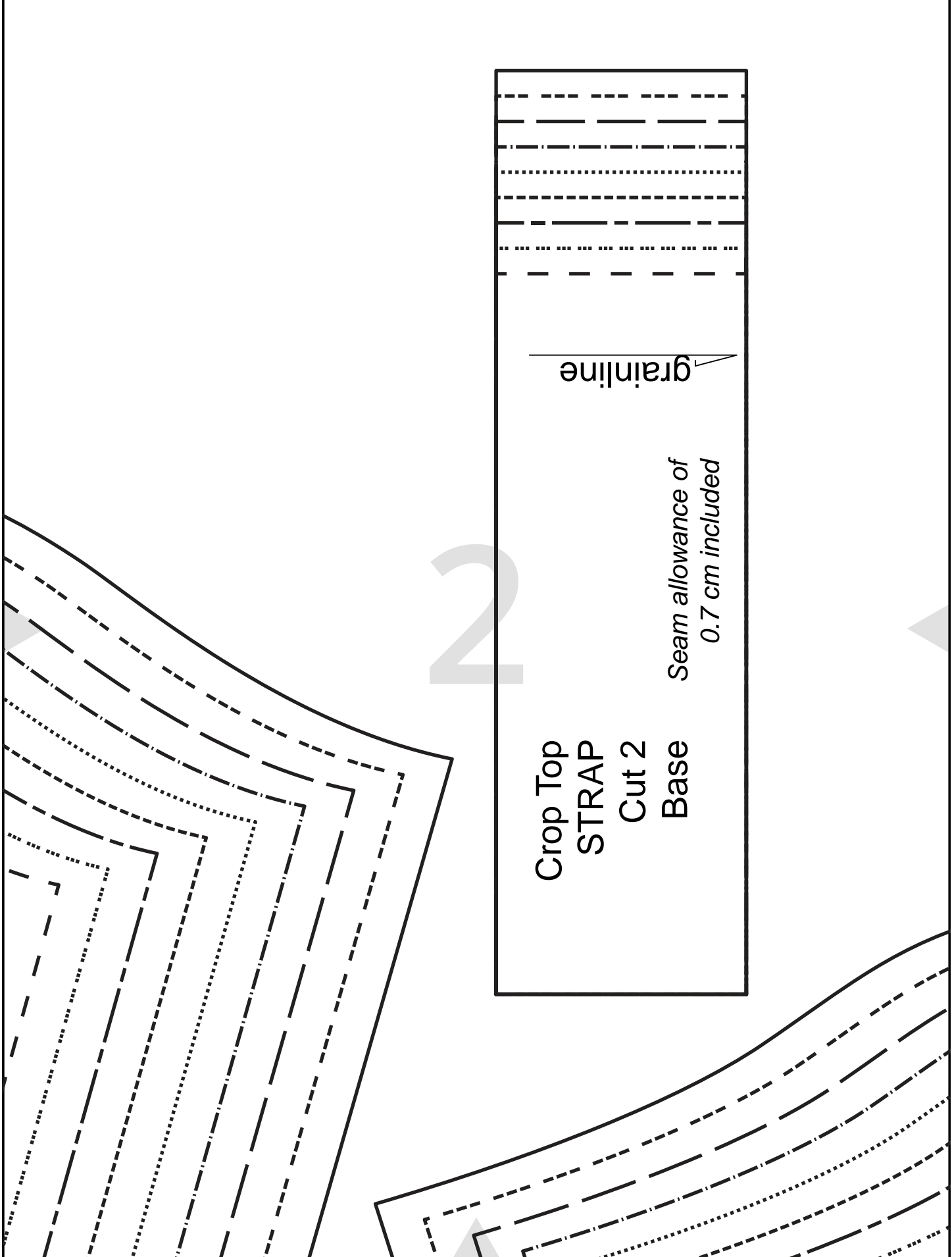


place on fold

grainline

Crop Top
BACK
Cut 2 / place on fold
Base

Seam allowance of
0.7 cm included



grainline

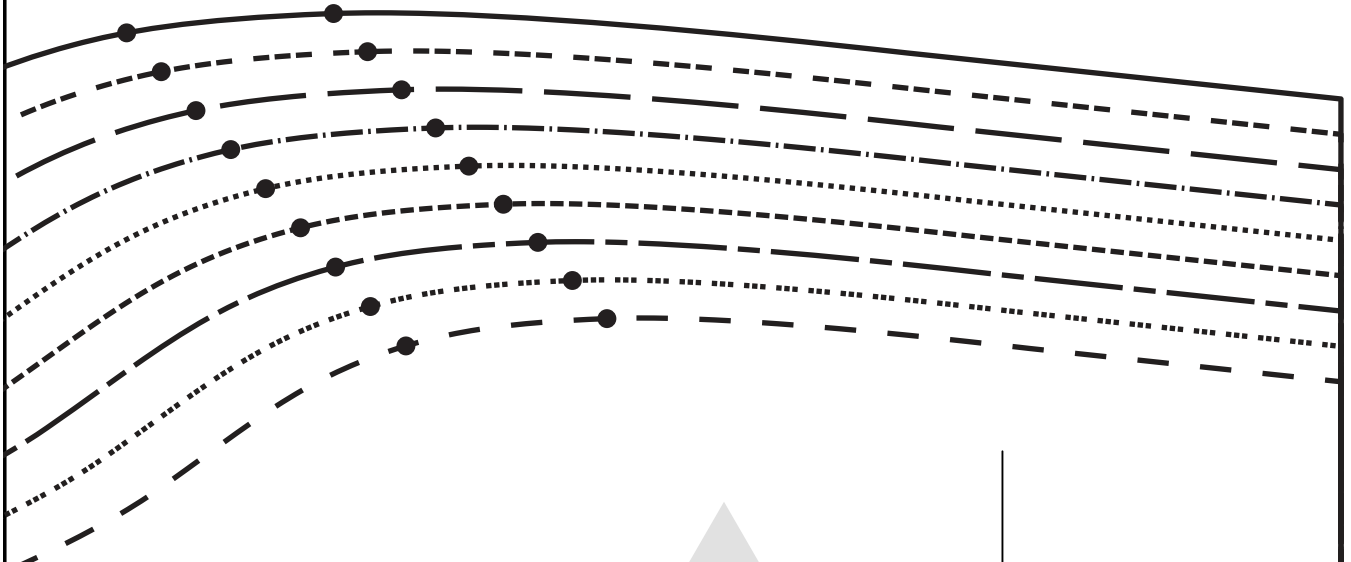
Crop Top
STRAP
Cut 2
Base

Seam allowance of
0.7 cm included

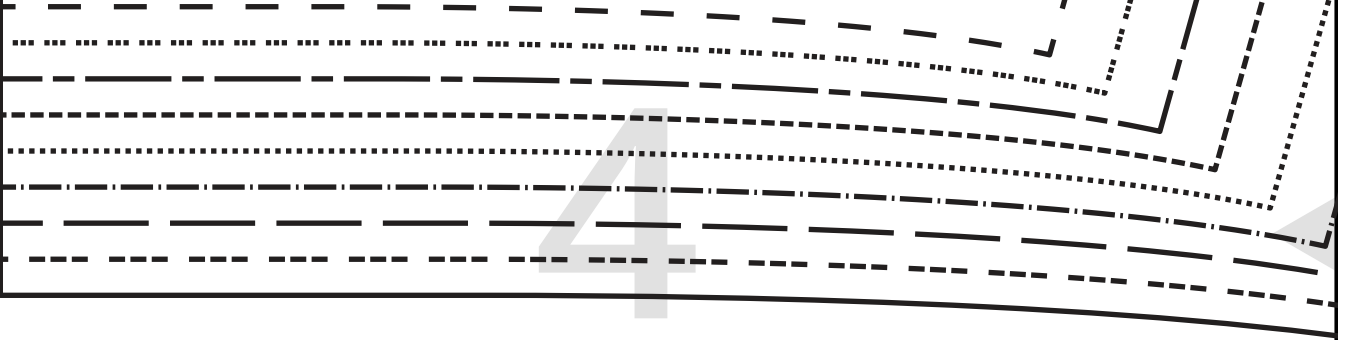
PATTERN SIZE KEY

- - - - - SIZE 34
- SIZE 36
- - - - - SIZE 38
- - - - - SIZE 40
- SIZE 42
- - - - - SIZE 44
- - - - - SIZE 46
- - - - - SIZE 48
- SIZE 50

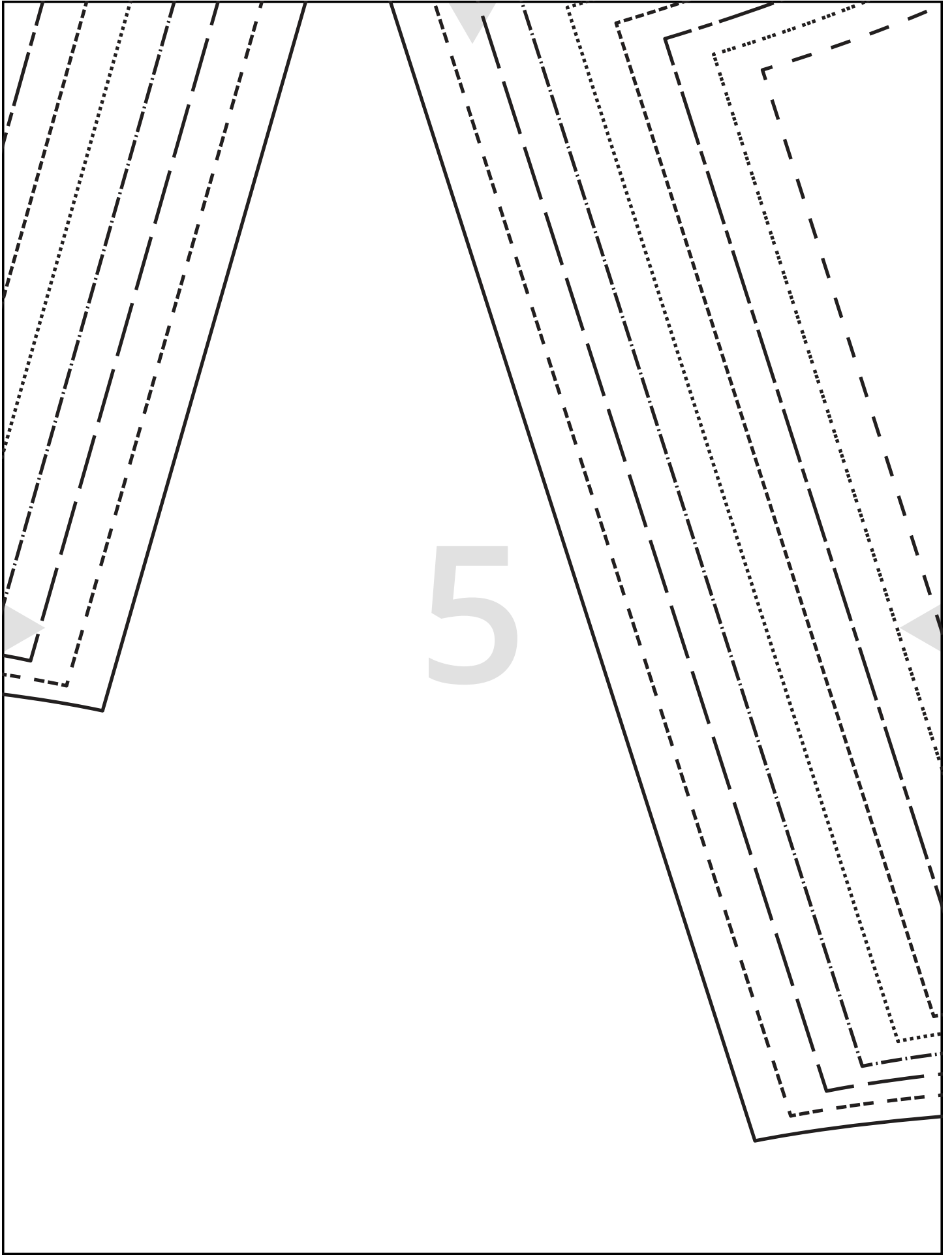
3



Center Back



4



Crop Top
FRONT
Cut 2 / place on fold
Base

*Seam allowance of
0.7 cm included*

6

grainline

Center Front / place on fold

