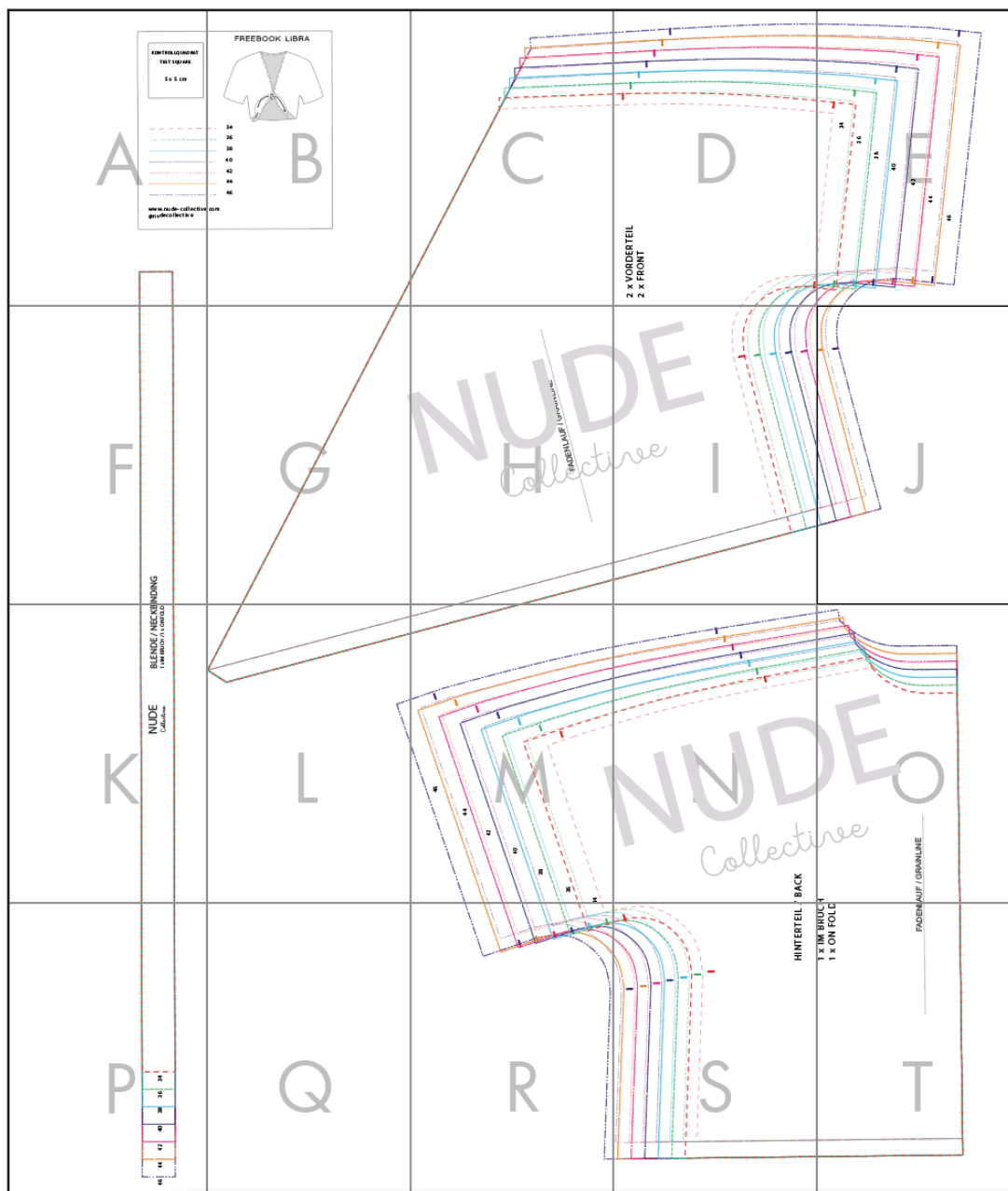


Freebook Libra

SCHNITTTEILÜBERSICHT

! Unbedingt die Druckeinstellung „Originalgröße“ oder „tatsächliche Größe“ einstellen. Klebe die Schnittteile aneinander. Schneide die Teilstücke des jeweiligen Schnittteils aus und klebe sie mit Klebestreifen zusammen.

! Printing in A4: make sure to select „real size“ or „100%“ and turn off automatic page adjustment. Print the page with the 5 by 5cm square first to confirm the printer settings are right. Have fun! :)

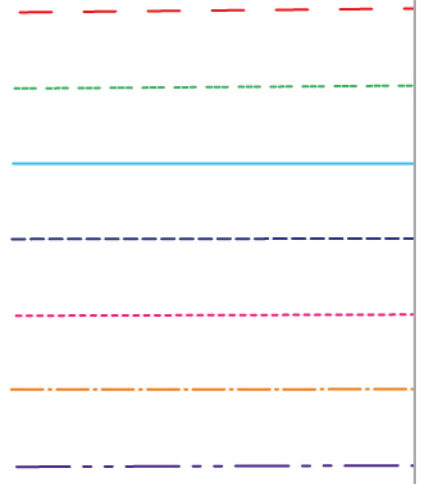


KONTROLLQUADRAT

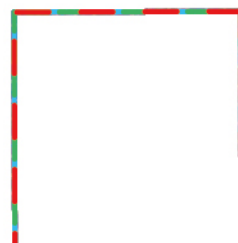
TEST SQUARE

5 x 5 cm

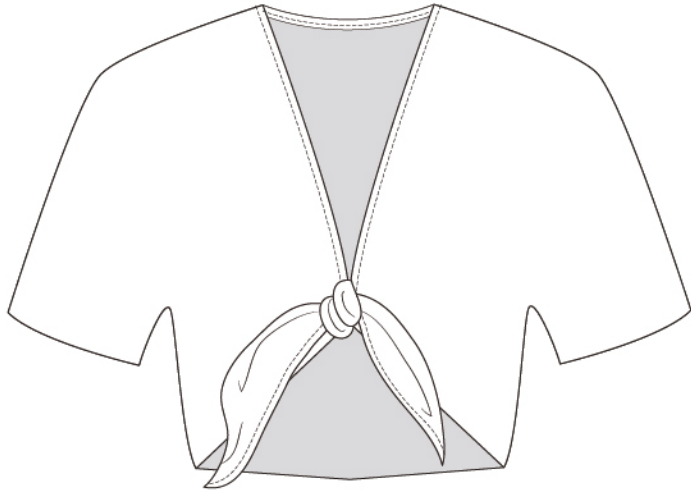
A










www.nude-collective
[@nvdecollective](mailto:nvdecollective)



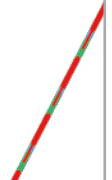
FREEBOOK LIBRA

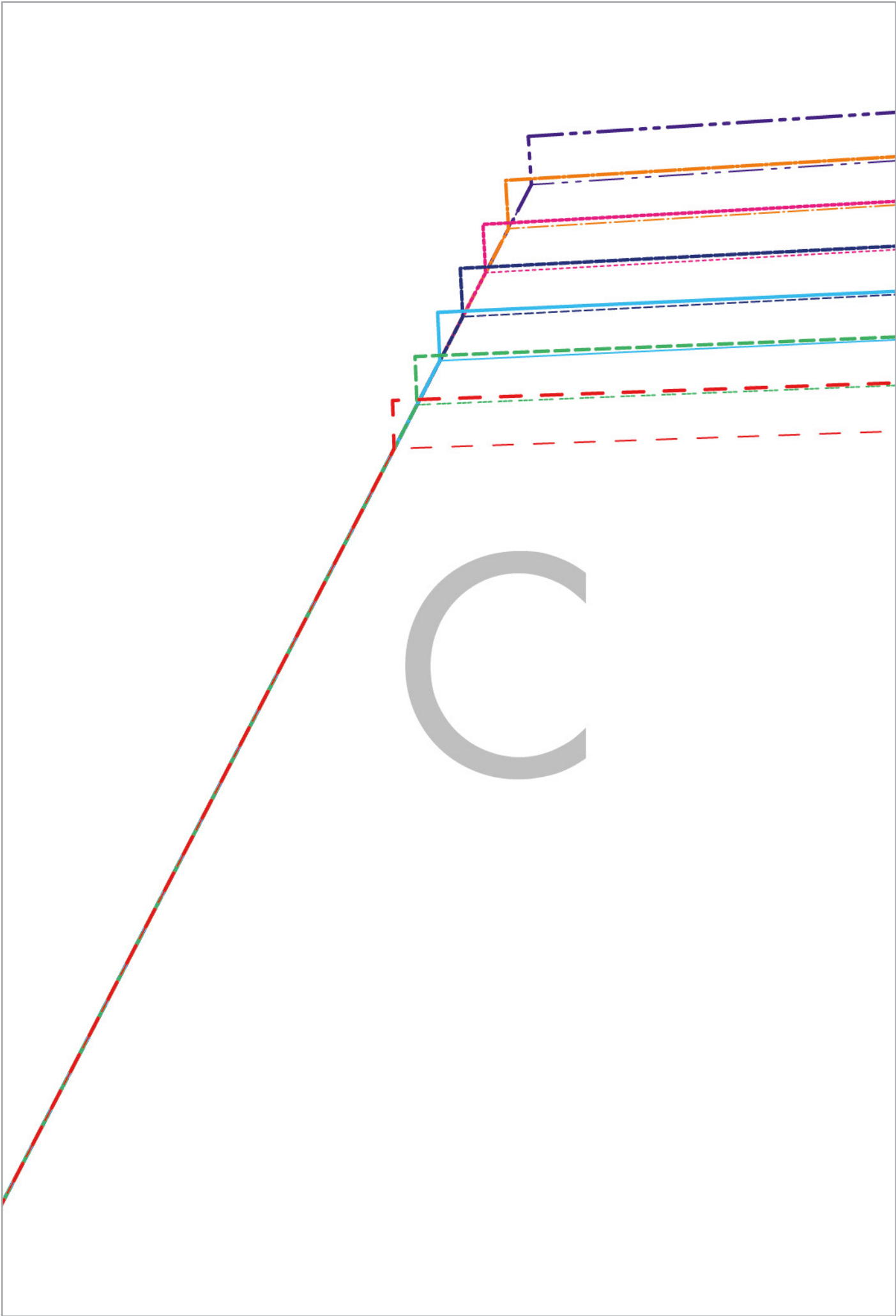


-  34
-  36
-  38
-  40
-  42
-  44
-  46

B

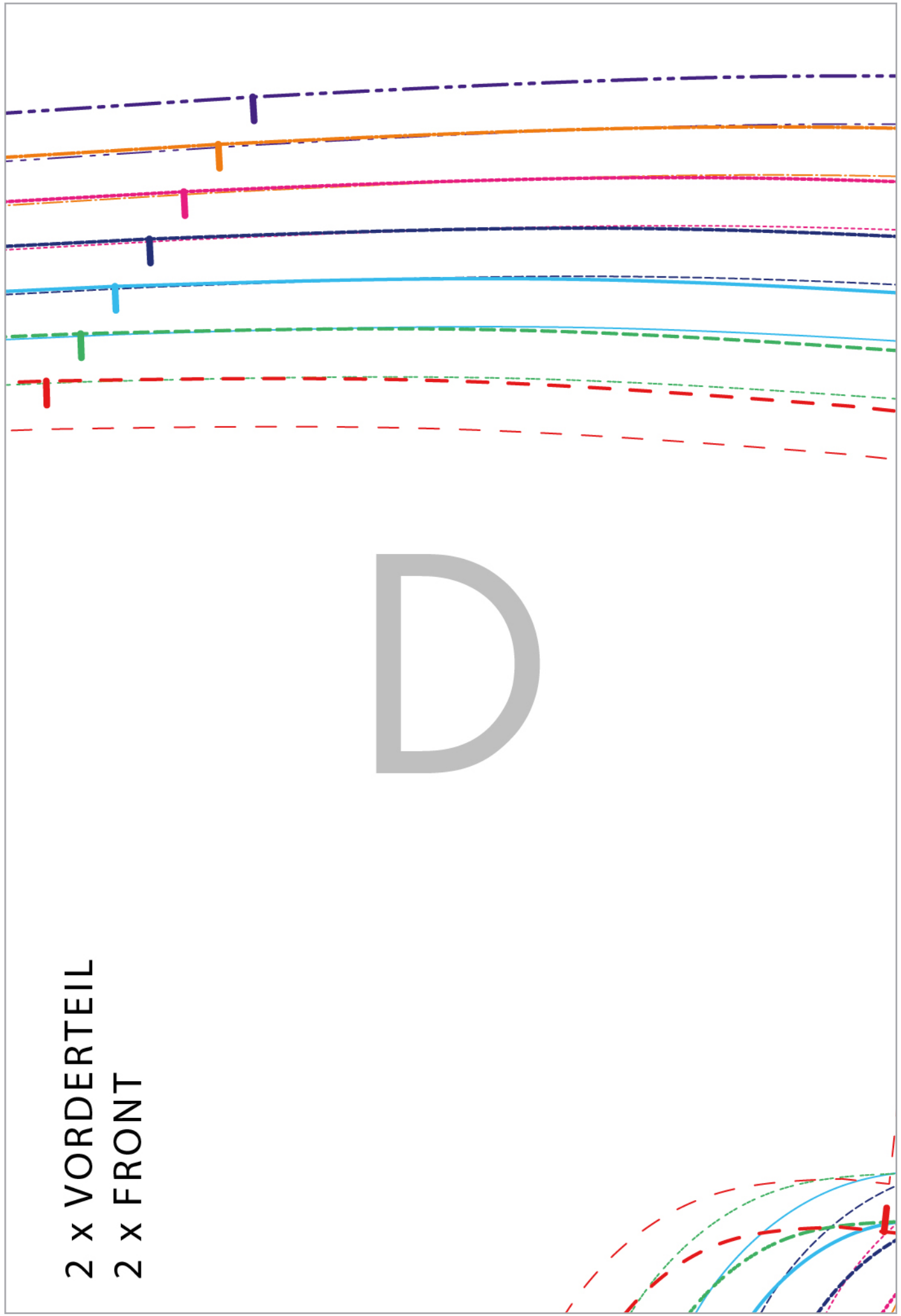
.com

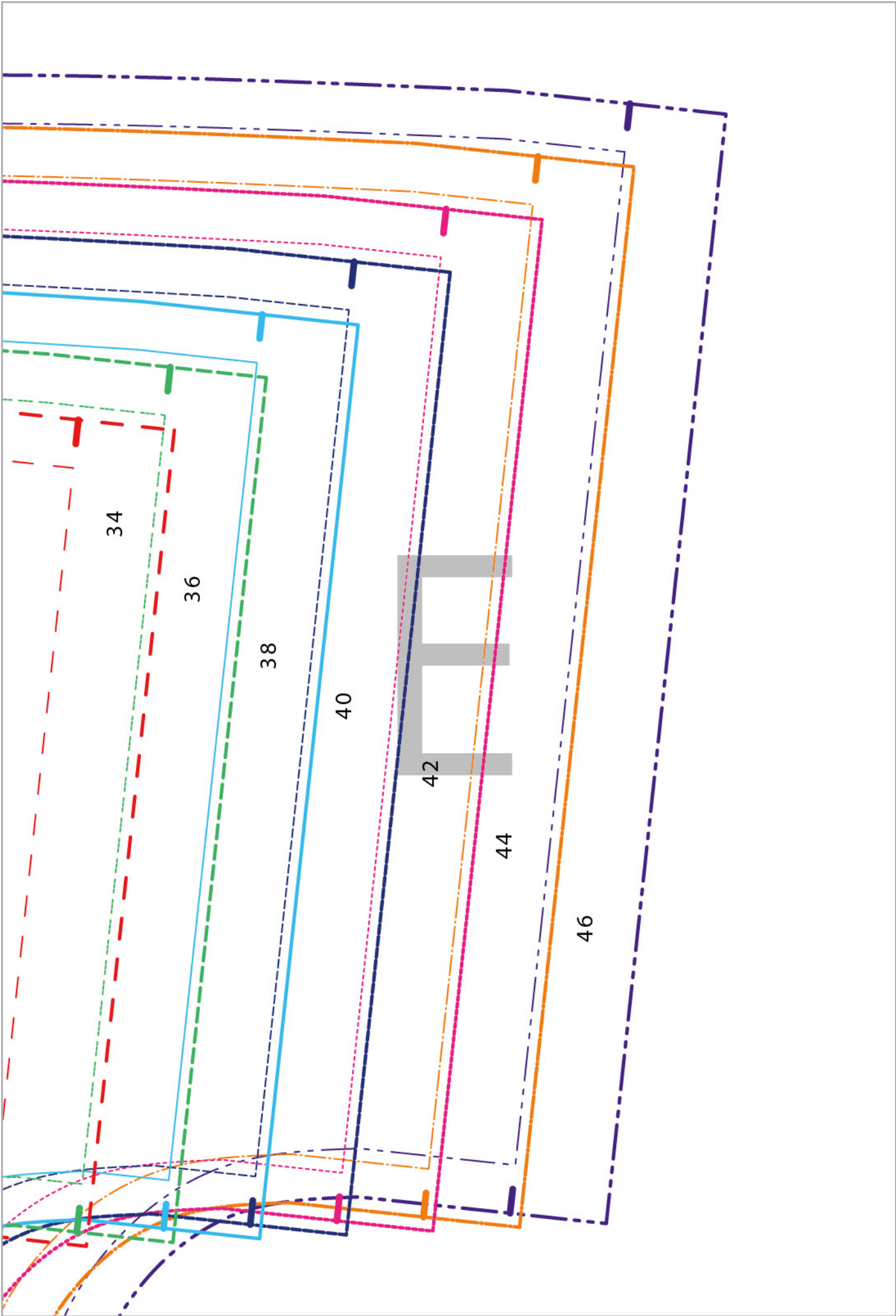




2 x VORDERTEIL
2 x FRONT

D





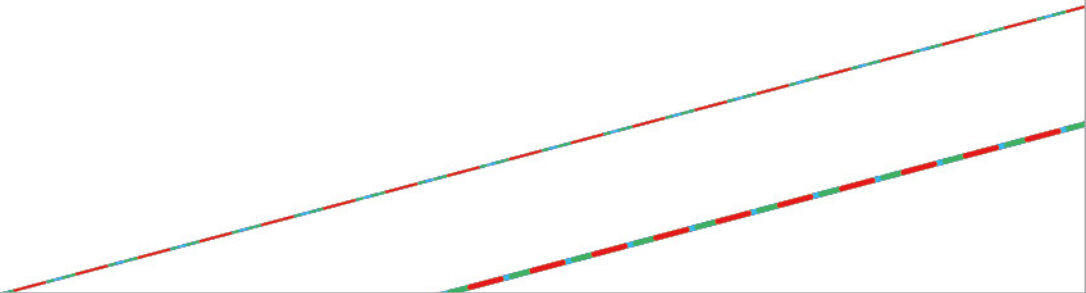
FF

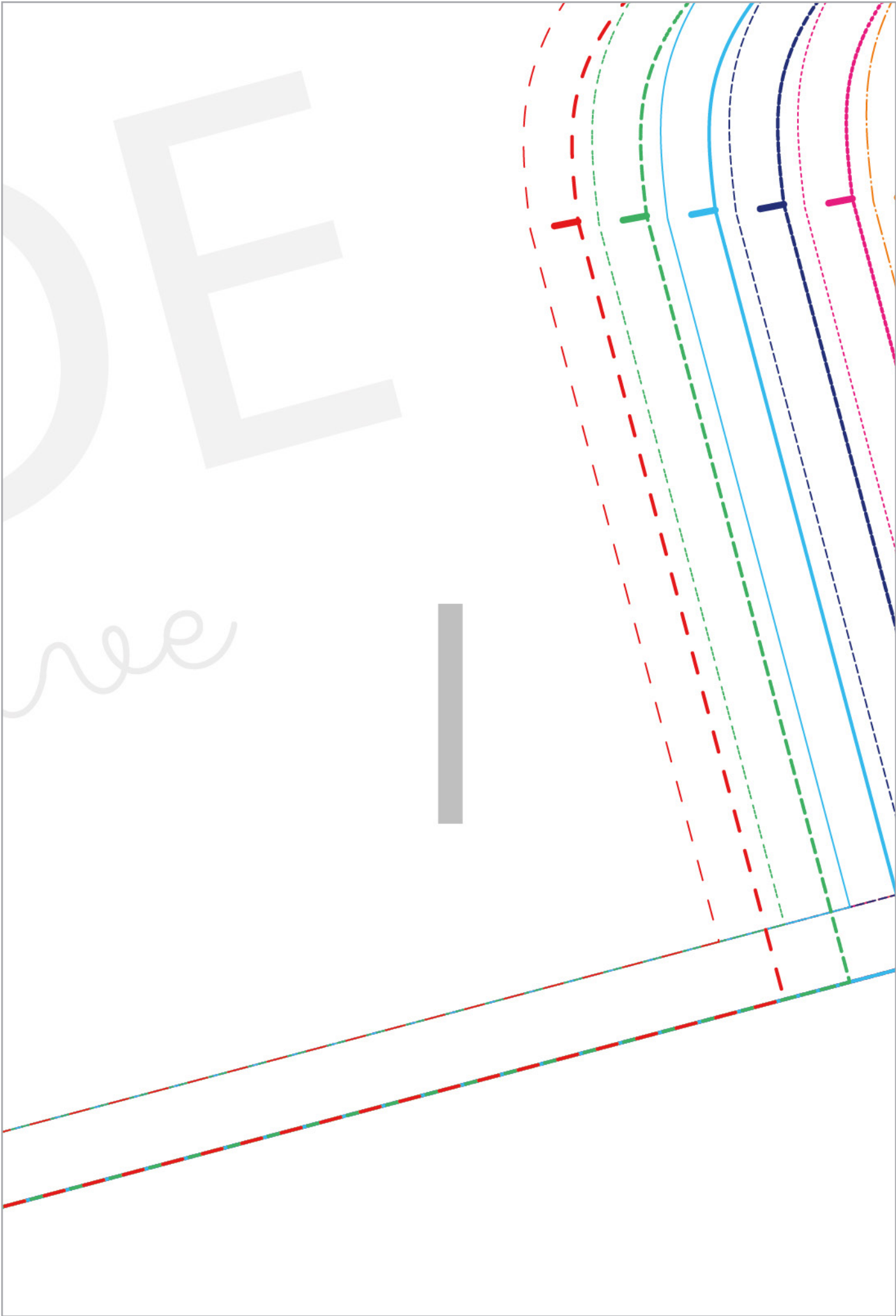
INDING

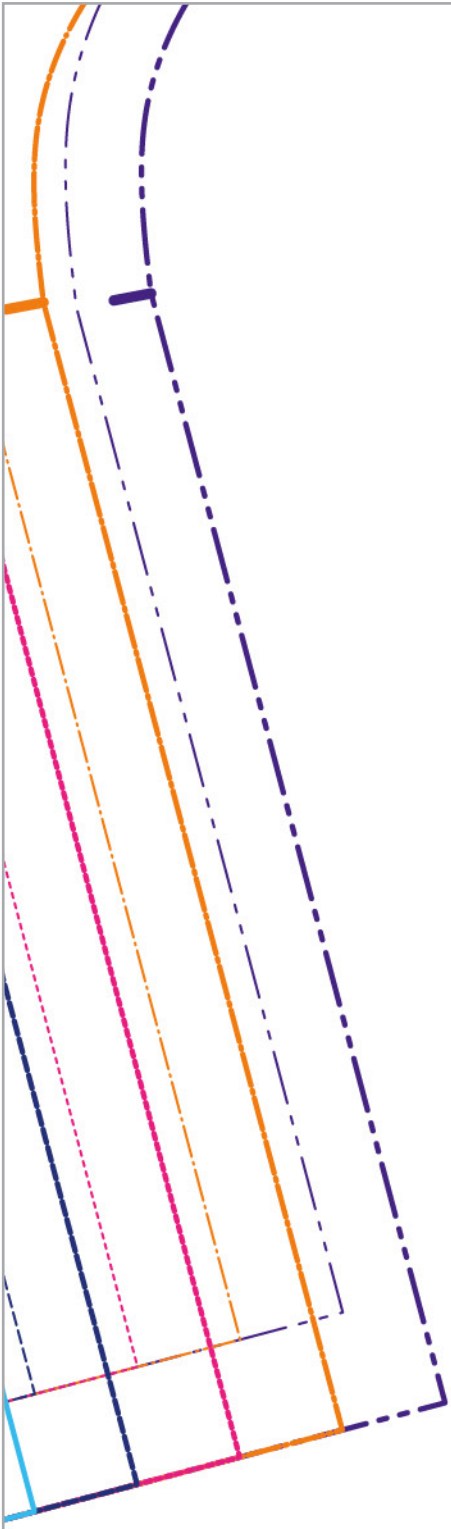
G

MUND
H
FADENLAUF / GRAINLINE

Collecti





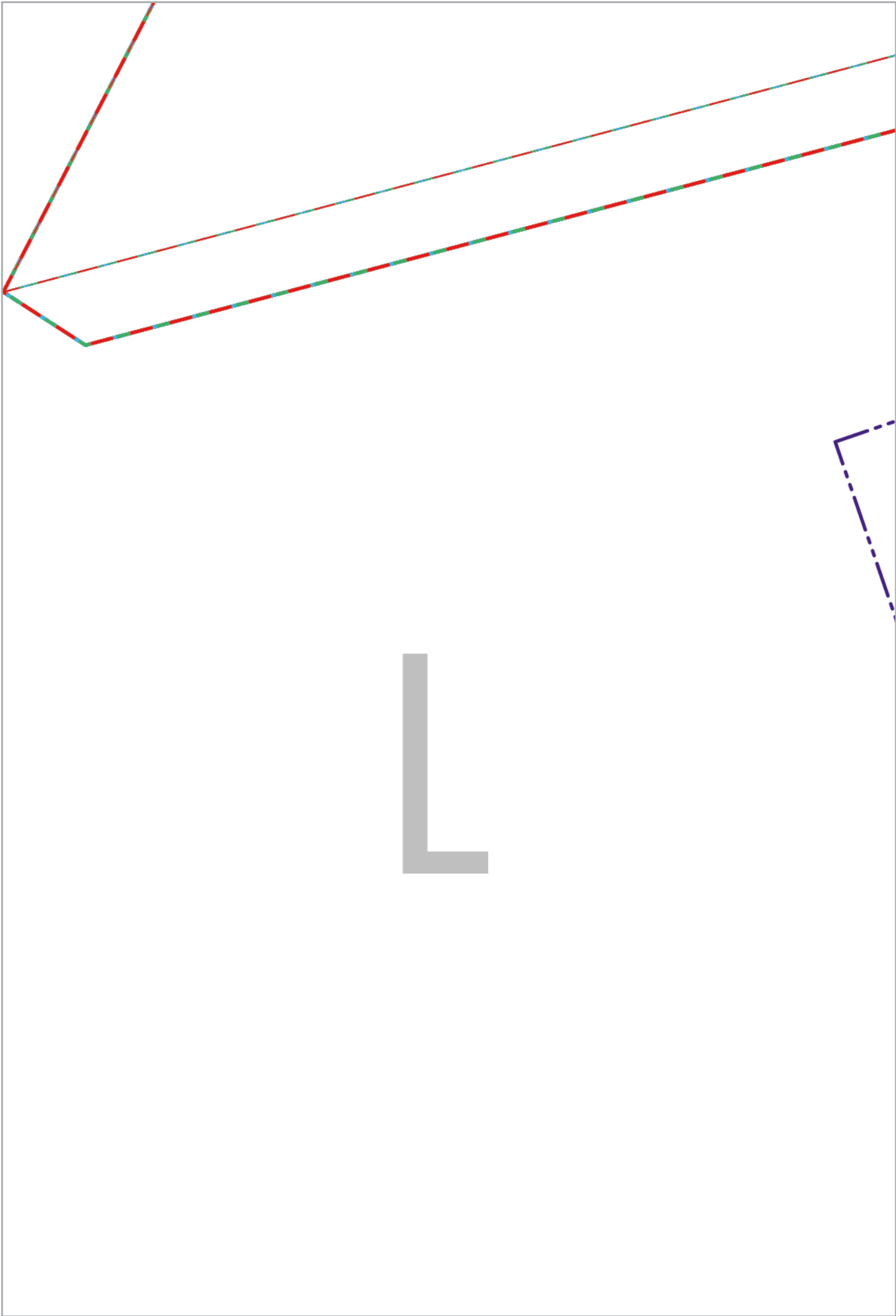


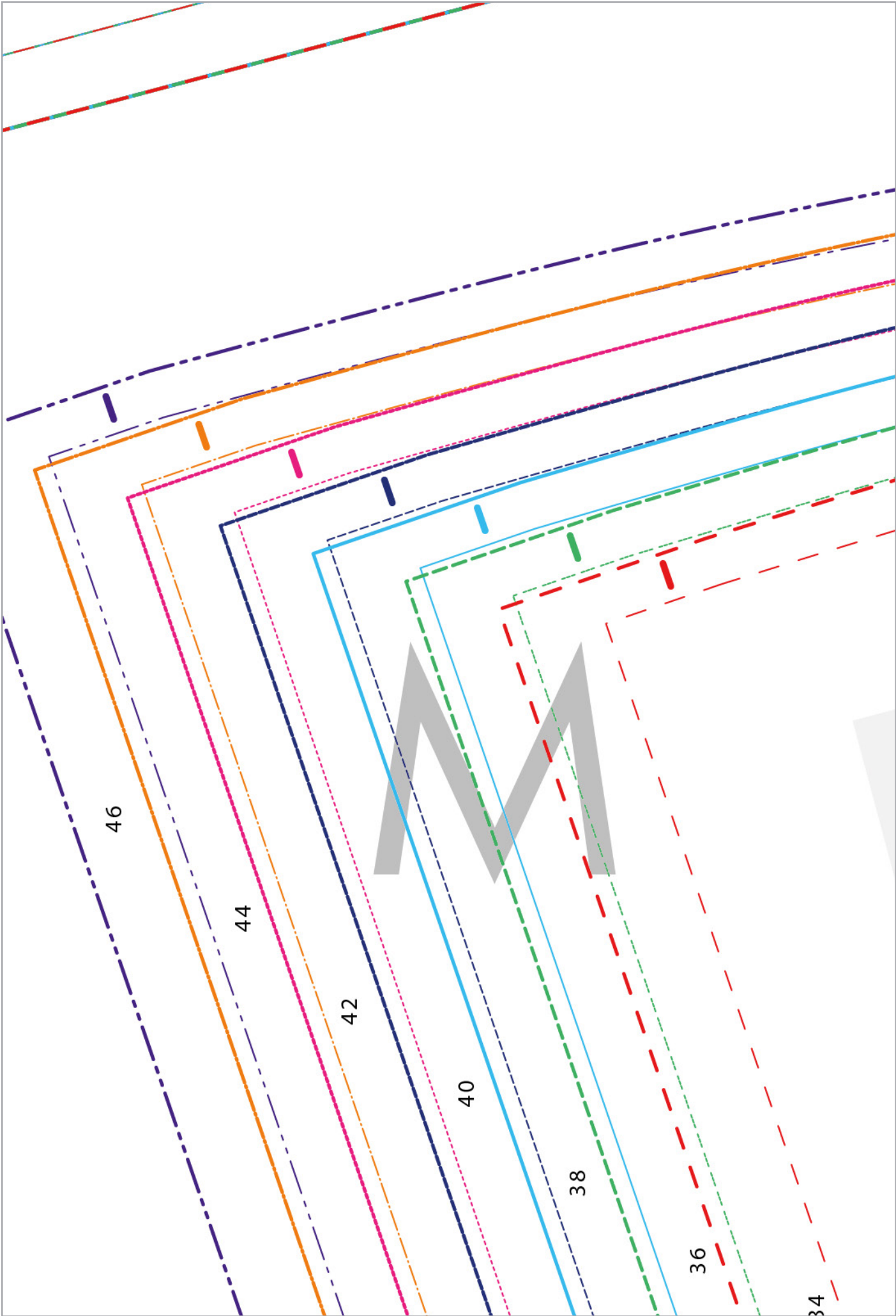
J

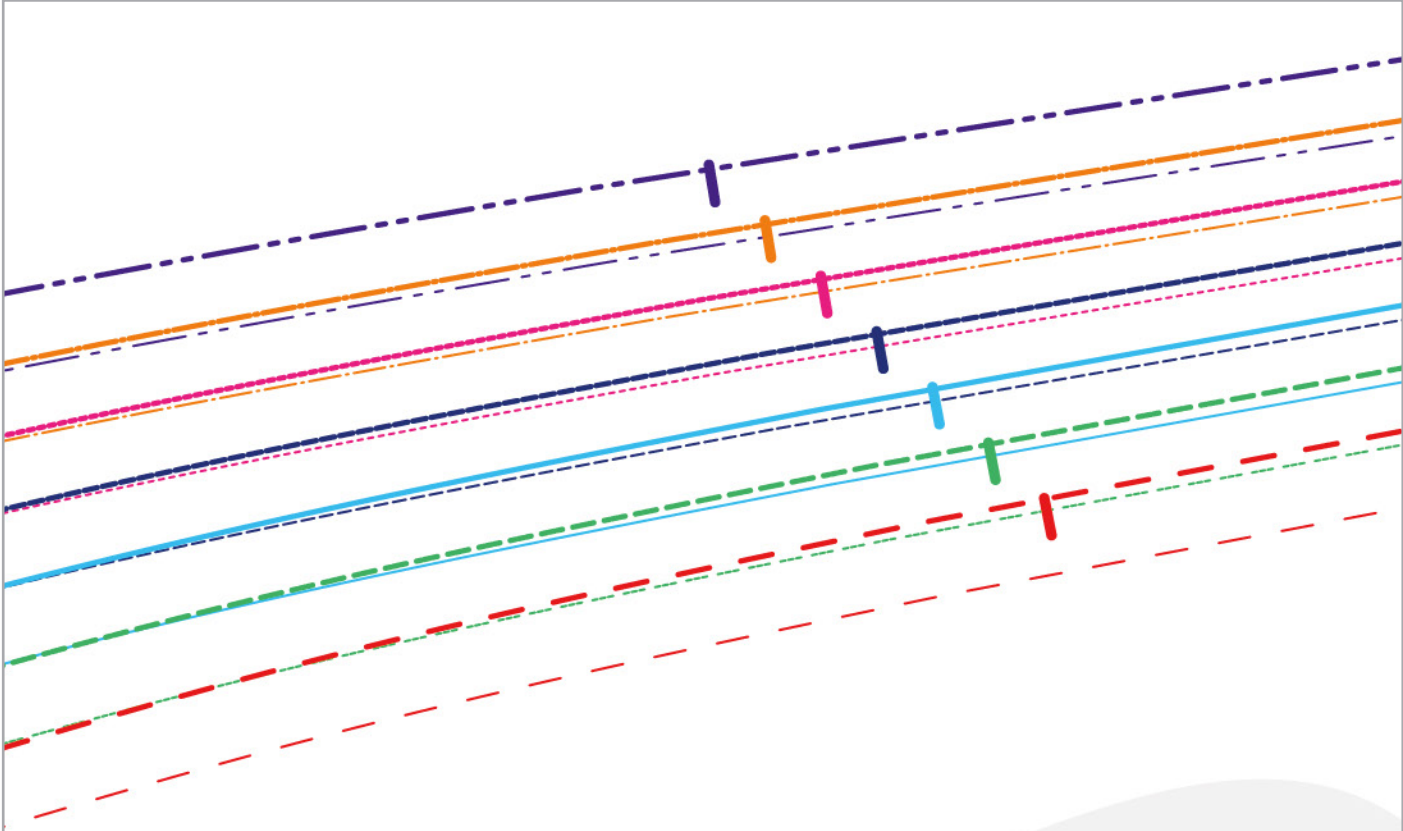
K

NUDE
Collective

BLENDE / NECKB
1 x IM BRUCH / 1 x ON FOLD







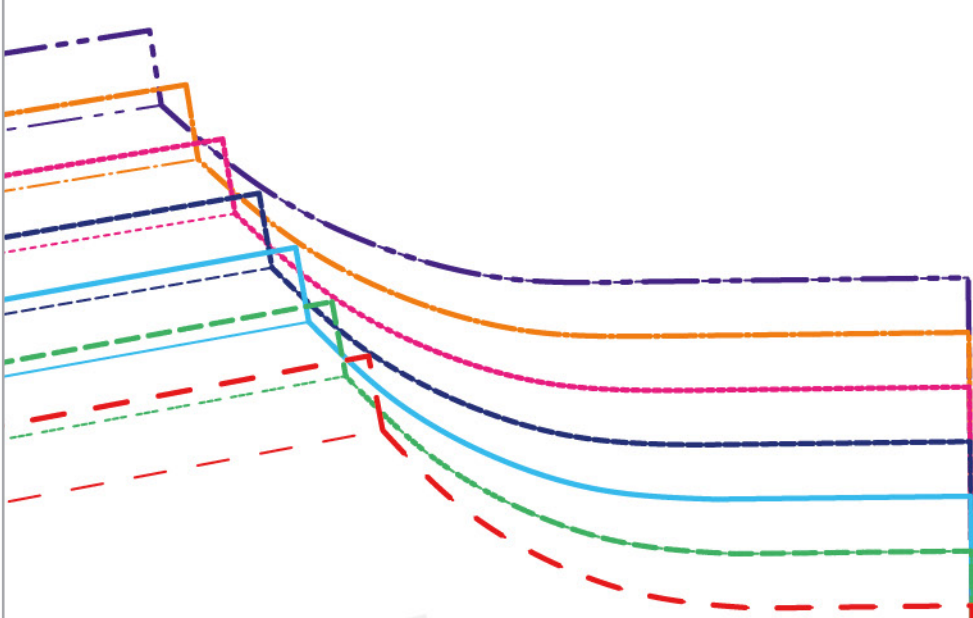
MINNED

Collecti

BACK

see

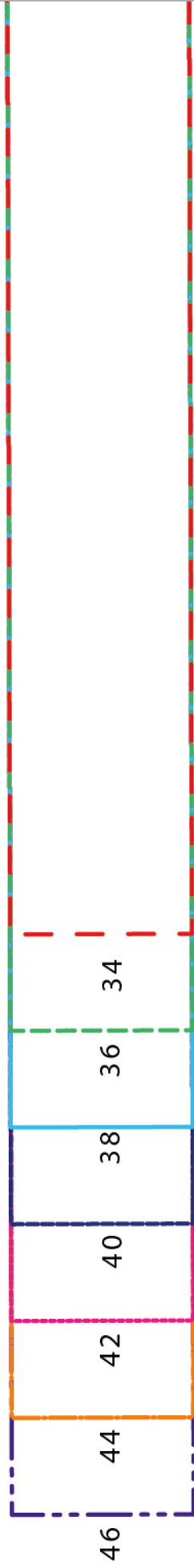
AUF / GRAINLINE



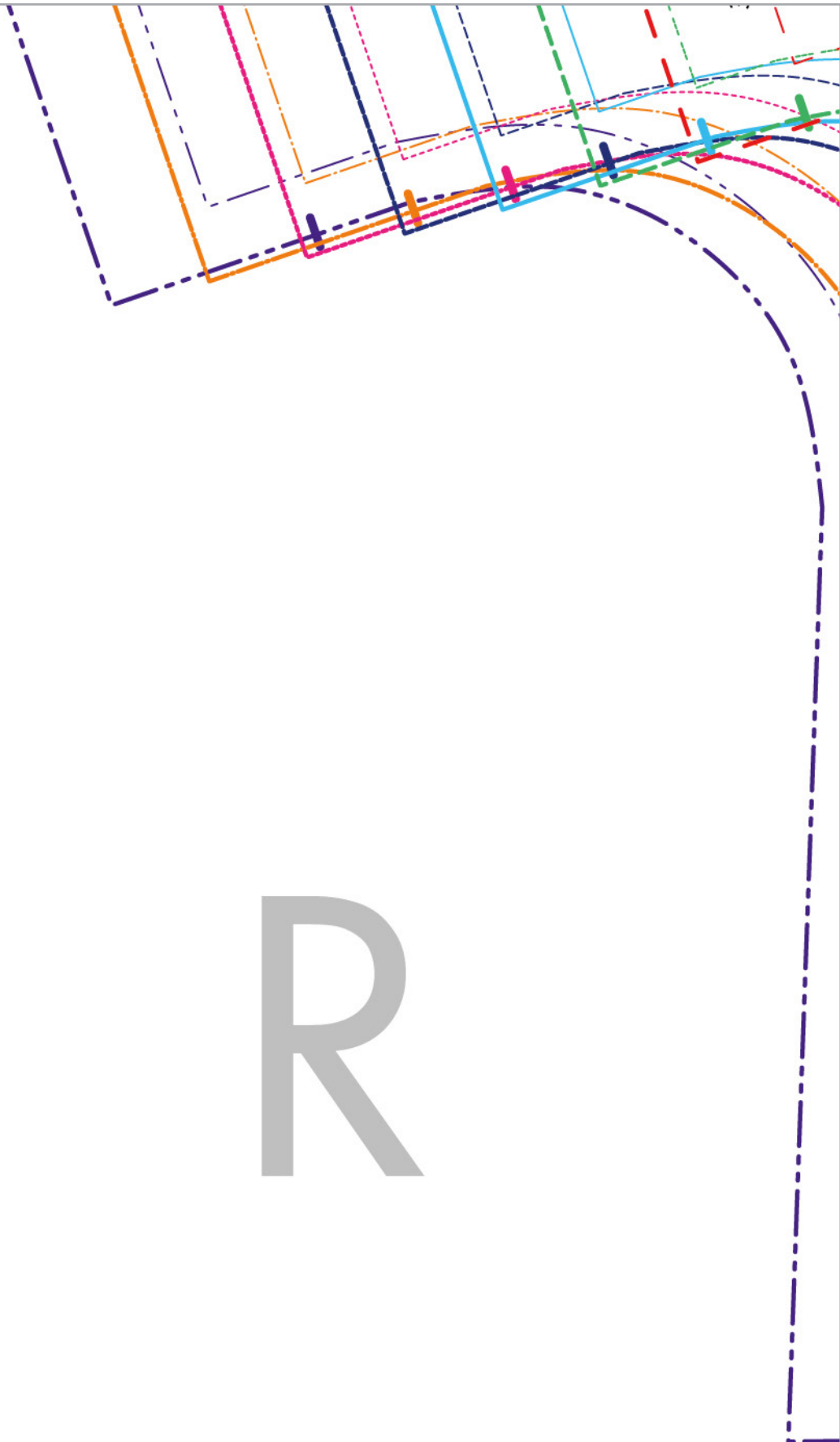
DEFO

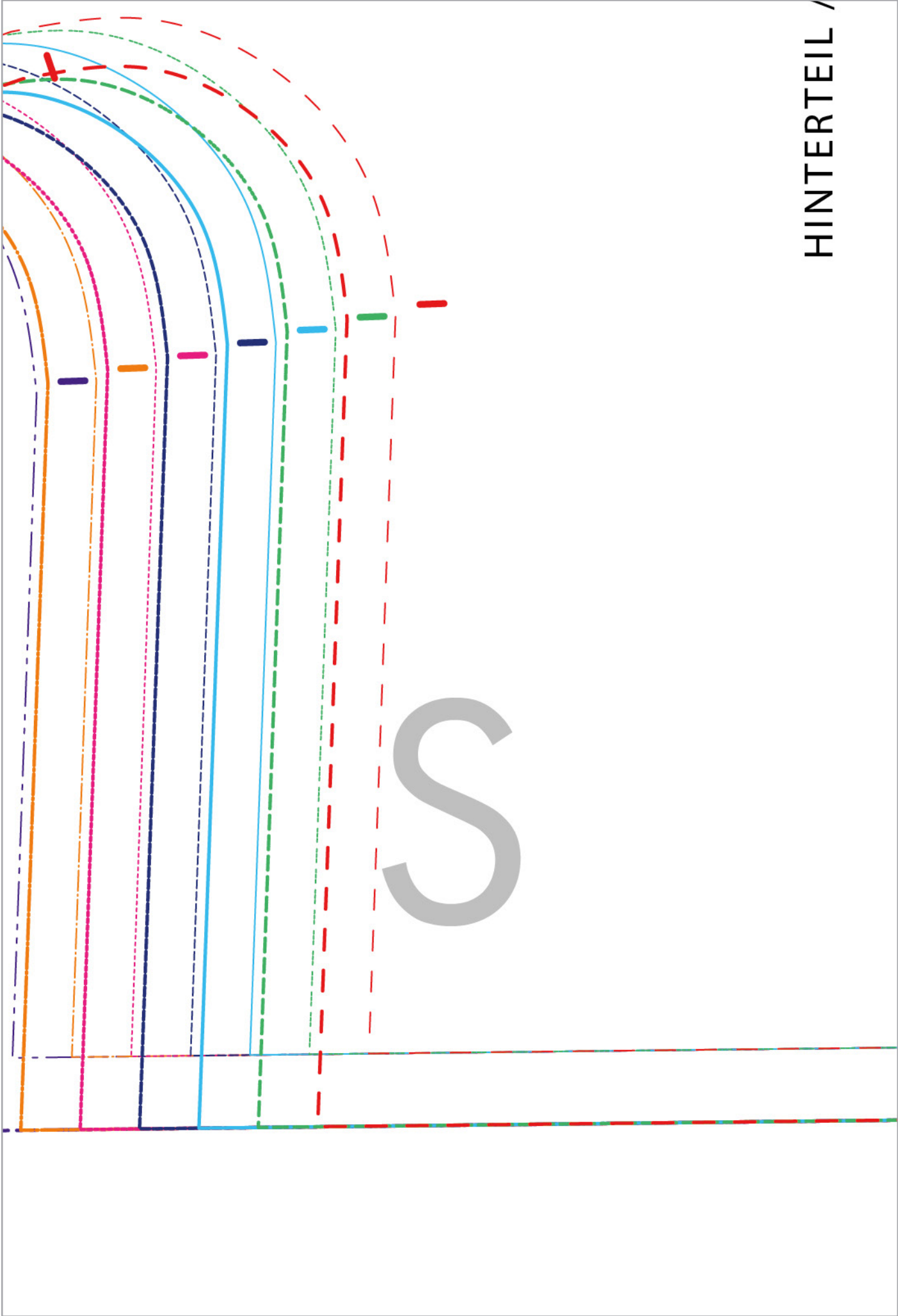


P



Q





HINTERTEIL /

1 x IM BRUCH
1 x ON FOLD

FADENL

